

assembly2cam

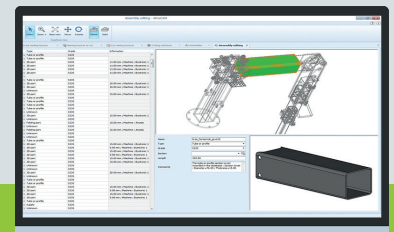
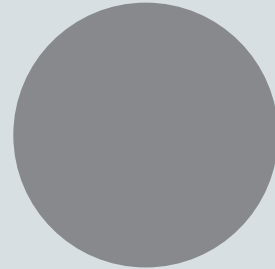
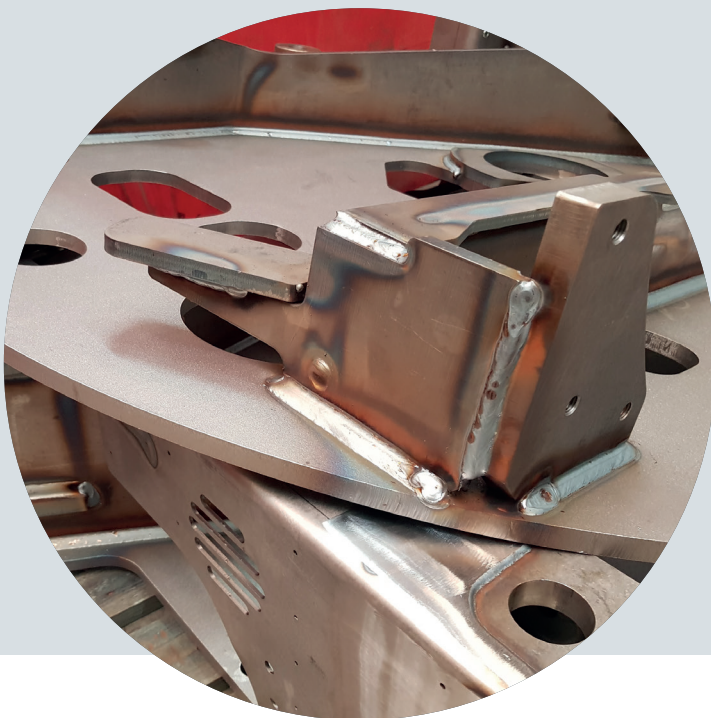
CAD assembly import for sheet metal quotation and manufacturing

Retrieving CAD assemblies for costing (quotation) or for manufacturing (sheet metal CAM) often requires the use of several software tools and implies repetitive and time-consuming tasks. With Assembly2cam, a module that is integrated in Almacam software, importing CAD assemblies becomes easy and quick by allowing the processing of any type of assembly parts (sheet metal parts, tubes and supplies), either for quotation- or for manufacturing- purpose, with Almaquote and Almacam Cut/Punch software applications respectively.

With Assembly2cam, it only takes a few minutes to import a CAD assembly, retrieve the corresponding quantities of parts, start the automatic geometrical recognition of the assembly, check or edit the part data and add operations for the quote calculation.

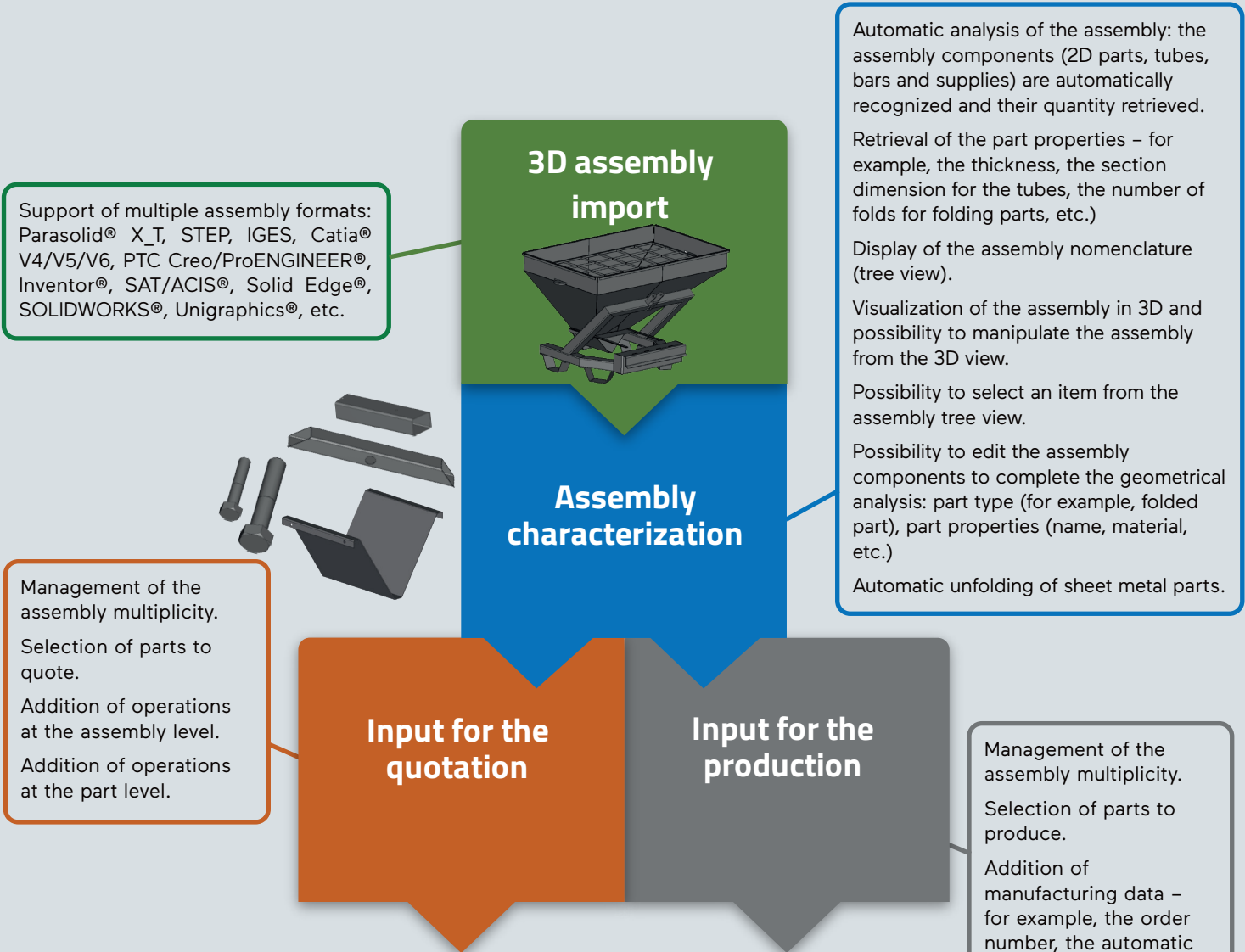
The imported assembly can also be used directly for the CAM preparation of parts to cut or punch with Almacam.

Taking advantage of the powerful functions of Almacam, the new generation CAM software for sheet-metal, and integrating the most advanced algorithms and software components of Alma, Assembly2cam is the most comprehensive and multipurpose assembly import tool in the market.



➔ Advantages and benefits

- ✓ An assembly import tool for both quoting and manufacturing.
- ✓ A single tool for importing a variety of parts (2D and folded parts, tubes and bars, supplies).
- ✓ Efficient algorithms for the automatic recognition of the assembly parts and their properties, resulting in significant time savings.
- ✓ A user-friendly assistant allowing to easily complete the information of the assembly and its components.
- ✓ The automatic retrieval of quantities for the parts to quote or manufacture.
- ✓ The automatic unfolding of sheet metal parts.



almaqoute

almacam

CUT-PUNCH

